



Panel Saws

Saw Trax Sign Makers Packages

Compact Size	1
Full Size	1

Saw Accessories 2

Options..... 2

Premium 7-1/4" Blades	2
Floating Router Plate.....	2
ACM Insert	2
Frame Dust Collection Upgrade	2
Wall Mounting System.....	2
Sheet Clamp	2
Full Builder's Extension	2
Mid-Fence	2
Laser Cutting Guide.....	2
Flip Stop System	2

Dolly and Panel Carts

Rack and Roll Safety Dolly Cart	3
Panel Express Panel Cart	3



CALL (800) 642-4872 **FAX** (877) 329-6424 **E-MAIL** sales@earlmich.com



SIGN MAKERS PACKAGES

Compact



Scan for additional information or go to www.earlmich.com/sawtrax

Fullsize



Price

Compact 52 - 52" Crosscut 5' Frame	\$2,374.67
Compact 64 - 64" Crosscut 5' Frame	\$2,585.66

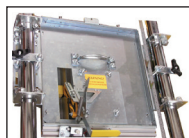
Price

Fullsize 52 - 52" Crosscut 10' Frame	\$3,039.85
Fullsize 64 - 64" Crosscut 10' Frame	\$3,229.90

PACKAGES INCLUDE:

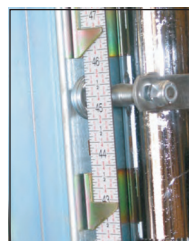
Pivoting Knife Insert

- Swap from saw to knife in seconds to cut your softer materials.
- Used to cut or score Sintra, expanded PVC, Coroplast, Gator Foam, cardboard, and Foam Board.
- Knife can RIP and cross cut.
- Uses OLFA® knife with "snap to sharpen" blades.



Dual Rip Gauge + Tape

- Pointers and measuring tape included.
- For fast and easy rip cuts.
- Use the pointer to set RIP measurement.
- An upper and lower pointer can be used to set rip widths from either direction.
- A lower spring maintains tape measure tension.



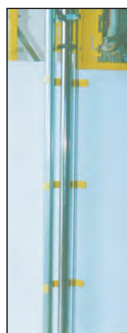
Stop Bar with Strip

- For fast, repetitive cuts.
- Strip support allows you to make cuts less than 1 inch wide.
- Can be placed on right or left lower fence or mid fence.



Measuring Tapes

- Self-adhesive metal tape.
- Can be applied to left or right side of the machine.
- Can be used on lower fence or mid-fence.

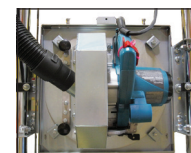


Spring Hold Down

- Adjustable spring steel fingers put pressure on your sheet to keep it in place.

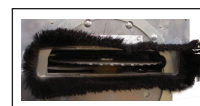
Spinning Saw Insert Plate

- Allows user to switch from cross cut to rip cut position without removing saw plate.
- Unique locating pin design ensures 90° turns of the carriage.
- Makita 5700N 7-1/4" saw.



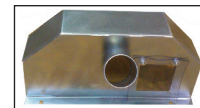
Dust Containment Brush

- Brush under the saw plate will channel saw dust up into the dust hose.
- Keeps debris knocked down when rip cutting.
- Attached with magnet for easy removal when cutting thick material.



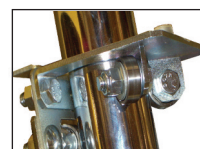
Dust Hood and Hose

- Fits the Makita 5007N saw only.
- Has viewing window so you can see the blade.
- A 12' long, 2 1/2" dust hose is included.



Sealed Roller Bearings

- Provides smoother carriage action.
- Allows for cutting with tighter tolerances.



Folding Stand

- Attaches to the back of the frame, so there is no need to wall mount your unit.
- Allows for portability.
- Opens and closes just like a ladder for quick storage & set up.
- Hinged with cross braces for added security.



Transport Wheels

- Big 5" wheels will allow you to easily transport your unit.
- Unique design has the wheels off the ground when set up with folding stand so the unit will not roll away from the user when in use.
- To transport the unit, simply tilt the unit vertically until the wheels make contact with the ground.



CALL (800) 642-4872 **FAX** (877) 329-6424 **E-MAIL** sales@earlmich.com



*Exclusions may apply.

2 Saw Accessories

Options

Premium 7-1/4" Blades



- 60 Tooth Premium Plastics Blade
 - Perfect for plastics such as Sintra, Lexan and Styrene.
 - Smooth, clean and melt-free cuts on most plastics.
- 60 Tooth Premium Aluminum Blade
 - Perfect for non-ferrous metals such as aluminum, copper, brass and bronze.
 - Works well for plywood and other timbers.

Price

Premium Blade (for aluminum)	\$114.30
Premium Blade (for plastics)	\$114.30

Floating Router Plate



- Floating platform generates uniform dados even on bowed or twisted material.
- Accommodates most router motors.
- Set up allows the router to follow the contours of the sheet.

Price

Floating Router Plate	\$407.66
-----------------------	-----------------

ACM Insert



- Dust free cutting system.
- Cuts 3 and 4 mil Dibond, .040 Aluminum, 3-6 mil Forex and Expanded PVC, 5 mil AlumaCorr.
- Two opposing circular cutters pinch the material forcing it to split.
- Cuts are rounded so there are no sharp edges.

Price

ACM Insert	\$427.56
------------	-----------------



Frame Dust Collection Upgrade

- Bottom of the frame includes an additional port. As the dust falls down to the bottom, the additional port draws dust away.
- Includes 4" port, adapter and additional dust guards.
- Note: (4" hose or vacuum not included).

Price

Frame Dust Collection Upgrade	\$123.83
-------------------------------	-----------------



Wall Mounting System

- Allows you to permanently mount the panel saw to the wall.
 - Includes mounting brackets and hardware.
- NOTE: Must remove folding stand in order to secure saw to the wall.

Price

Wall Mounting System for Compact	\$40.94
Wall Mounting System for Full Size	\$60.95

Sheet Clamp



- Holds material under carriage.
- Handy with cutting long narrow pieces on the material rollers or long pieces on the mid fence.
- Magnet is used to hold it open and a different magnetic strip holds it onto the center pan.
- Easily removable when rip cutting.
- 4 feet in length.

Price

Sheet Clamp	\$284.80
-------------	-----------------

Full Builder's Extension



- Set includes two 28" fence extensions.
- Extends compact wheel base to 10 feet.
- Easily removed for storage or transport.

Price

Full Builder's Extension	\$400.05
--------------------------	-----------------

Mid-Fence

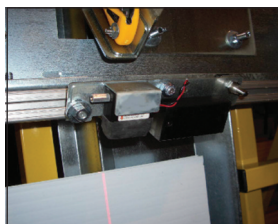


- Prevent back strain by cutting smaller pieces at waist level.
- All steel construction – no warping or splintering!
- Shelf easily snaps on and off.

Price

Mid-Fence	\$380.05
-----------	-----------------

Laser Cutting Guide

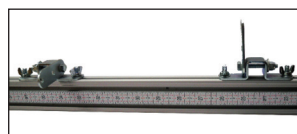


- Set to illuminate cut line of your circular saw or knife cutter insert.
- Great for trimming printed substrates.
- Uses standard "AA" batteries.

Price

Laser Cutting Guide	\$190.50
---------------------	-----------------

Flip Stop System



- Perfect for use with longer sheets or when cutting exact lengths repetitively.
- Can be placed on the right or left side of machine.
- Includes specialized aluminum extrusion, tape and two adjustable stops.

Price

Flip Stop System 56"	\$284.80
Flip Stop System 96"	\$341.95



SHOP ONLINE www.earlmich.com **FREE** local delivery on most items.



*Exclusions may apply.

Rack & Roll Safety Dolly Cart



- Built to perform, this low profile dolly has an all caster zero turn radius for excellent maneuverability.
- Can carry 3 to 4 times the load of traditional flat carts or hand trucks while being easier, faster and safer to load.
- All steel US made uni-body can carry up to 1000 lbs.
- Interchangeable post system can be used vertically or horizontally for maximum flexibility to move almost any load
- With the 8 posts it is ideal as a rolling rack to store material or move product to the printer or cutter or unloading truck.
- It is ideal for loading materials onto a panel saw.

Cart Dimensions: 30"L x 25"W x 8.75" H

	Price
Rack & Roll Safety Dolly	\$474.91
Vertical Post (Set of 2)	\$37.76

Panel Express Panel Cart



- Reduces lifting injuries and shop accidents.
- Easy one-man handling large sheets.
- Tie down slots for straps.
- Holds up to 10 half inch sheets.
- Incredible stability and maneuverability.
- All steel construction.
- Carrying capacity 600 lbs.
- Fully assembled, net weight 58 lbs.

	Price
Panel Express Panel Cart	\$502.50
Pivoting Shelf, Left Side	\$61.21
Tool Box	\$29.36

Why should you choose Saw Trax®?

"Accurate though Innovation, Simple by Design" is not just a statement, it's a goal

VERSATILITY:

- Saw Trax® offer a **wide variety of cutting tools**, such as a floating router, utility knife, rolling shears or a saw. All of our cutting tools can be utilized in the same unit. Standard saw is a Makita, but Skil Worm Drive Saw or Milwaukee 10" saw are available in the 2000 and 3000 series model.
- Our standard saw plate can utilize most **any 7-1/4 inch saw**.
- Saw Trax® Panel Saws are the only panel saw that has the capability to **raise the material support rollers to a higher level** so you may cut your material from the bottom up, to eliminate shattering of thin plastics.
- We are the only panel saw company to offer a **floating router option** for every model. A floating router plate provides a consistent depth of cut by following the contours of your material.
- We utilize a **component based assembly**. If a part gets damaged such as guide tube or fence, just that part can be replaced. If you need to extend your unit, just add the components to extend the height or length. No need to replace the entire machine.
- Our **unique dust containment** brush allows for hassle free dust collection & offers a light dusting to knock any loose debris from your material into the dust collection area.

ACCURACY:

- Alignment of our machines is done at the factory, so they are **accurate out of the crate**. Our patented alignment system ensures the machine stays square. Saw Trax® uses a **Sealed Roller Bearing system**. This tracking system provides a smoother, more accurate tracking than the old style roller system & has a longer life expectancy.
- **Cutting accuracy** is with-in 1/64" of an inch.

CONVENIENCE:

- Saw Trax® has a **unique carriage design** that allows you to quickly change cutting tools.
- We use our exclusive, patented, set & forget, **Accu-Square™ alignment system**. Our machine never goes out of square.
- We **pre-assemble** all units in the factory, so your assembly is minimal.
- Saw Trax® panel saws use **standard size blades**, so replacement saw blades are easy to find.
- The saw motor that we use is an "off the shelf" saw. Should you need to replace you saw motor your down time is very minimal.
- Our **folding stand is pre-assembled** for your convenience and opens like a ladder, requiring only 1 person to set it up.
- Dust collection hook ups are standard on most of our models so there are no additional hidden expenses when purchasing a Saw Trax®.

SAFETY:

- When our Makita saw is off the machine, the **blade is guarded**. This protects the blade from being damaged when placed on a solid surface & prevents injuries like cutting yourself on an exposed blade.
- Our **utility knife blade retracts** to prevent injuries when off the machine.

SERVICE & COST:

- We offer **superior customer service** and our friendly staff is very knowledgeable and experienced as to how our machines operate and perform when cutting various material.
- Even with all these advantages, Saw Trax® still maintains the ability to offer a **superior product** for a **lower cost**.



CALL (800) 642-4872 **FAX** (877) 329-6424 **E-MAIL** sales@earlmich.com



* Exclusions may apply.