



Paints / Brushes / Gilding

Paints

Lettering Enamels

1 Shot	1
1 Shot Pearlescent Enamels	2
Background Enamels	2
Chromatic Bulletin Colors	2

Clear Coatings

1 Shot Gloss/Sign Restoring	3
1 Shot Speed Dry UV Acrylic Gloss	3
1 Shot GraphiGuard	3
SuperFrog Sunscreen Clear 7000-UV Protectant ...	3

Additives

1 Shot Tinting Colors	3
1 Shot Brush Cleaner	3
1 Shot Hardener	3
1 Shot Clear Flattening Paste	3

Reducers

1 Shot Chromo Flow Enhancer	4
1 Shot Low Temp Reducer	4
1 Shot High Temp Reducer	4

Water Based Primers

1 Shot Universal White Primer	4
1 Shot White High Build Primer	4

Solvent Based Primers/Blockout

1 Shot Metal & Wood Primer	4
1 Shot Fast Dry Block Out White	4

Chromatic Vinyl Coatings

1 Shot TI-COTE Clear Primer Barrier Coat	4
1 Shot Vinyl Primer	4

Brushes

Striping Brushes

Kafka Longliner Series	5
The Original "Mack" Sword Striping Brush	5
X-caliber - Series X	5
Bobbo Super Quad	5
Bobbo Long Handled Super Quad	5

Lettering Brushes

Brown Kazan Lettering Quill Series 179L	5
Grey Talahoutky Lettering Quill Series 189L	5
Jet Stroke Truck Letterer Series 1962	5
Mack Grey Stroke Lettering Brush Series 1932 ...	5
Lettering Quill Series 169	6
Hannukaine Lettering Quill Series 79	6
Sabeline One Stroke Signwriter Series 160	6
Kafka Signwriter Series Kwills	6

Outliner Brushes

Series 838 Outliner	6
Series 839 Outliner	6
Soft Hair Fitch Series 4031	6
Kafka Signwriter Series Liners	6

Scrolling Brushes

Kafka Signwriter Series Scrolling Stripers	7
Short Stroke	7
"The Virus" Scrolling/Script Series 444	7
"The Virus II" Scrolling/Script Series 444	7

Signature Brushes

Alan Johnson Signature Series 62	7
Kafka Scriptliner Series	7

Brush Kits & Handles

Anodized Aluminum Brush Kit	7
2-1/4" Long Polished Handle	7
Short Polished Aluminum Handle	7
Long Polished Aluminum Handle	7
Long Polished Double Aluminum Handle	7
Lazer Line Black Plague Brush Heads	8
Lazer Line Scarlet Fever Brush Heads	8
Lazer Line Green with Envy Brush Heads	8

Specialty Brushes

Mack Phat Handle Brushes Series 77	8
------------------------------------------	---

Industrial Brushes

Whitney II All Purpose Throw-Away Series 2001 .	8
Poly Brushes and Rollers	8
Roller Handles	8

Waterbase/Acrylic Brushes

Lettering Quill Series 2179	8
One Stroke Lettering Brush Series 2962	8
Outliner Brush Series 2838	9

Paint Tools & Accessories

Metal Brush Box	9
Wipe Out Tool (2240)	9
Mack Xcaliber Brush Preservative	9
Touch-Up Scraper Series 16	9
Brush Oil and Preservative	9
Kafka's "Cheap Insurance" Paint Strainers	9
Reasonably Difficult-to-Break Cup Holder	9
Staedtler Omnichrom Pencils	9
Stabilo Pencils	9
Paint Bottle Holder	9
Kafka Design Paint Bottle	10
Smooth Stroke	10

The Grid	10
Von Dutch Project DVD	10
Kafka's Welcome to my World DVD Vol. 1	10
Kafka's Welcome to my World DVD Vol. 2	10
Kafka's Lines and Designs Pinstripe System	10
Steve Kafka Pinstriping Kit	10
Gold Leaf Techniques Book, 4th Edition	10

Gold Leaf / Gilding

Genuine Wehrung and Billmeier Leaf	11
Giusto Manetti Genuine Italian Made Leaf	11
Lincoln Artisan Budget Leaf	11
Lincoln Especial Leaf	11
23K XX Gold Leaf in Rolls	12

Gold Size

Giusto Manetti Oil Size - Quick / Slow Dry	12
Dux Oil Base - Quick / Slow Dry	12
1 Shot 4008 Fast Dry Gold	12
Dux Water Base	12
Dux Acrylic Sealer Topcoat	12
Dux Burnish Sealer Primer	12

Gilders Supplies

Gilders Tip Series 1138	12
Mack / Percell Gilders Tip Series RP-4	12
Mack / Percell Triple Gilders Tip RP-7	13
Gilders Gold Surplus Removal Brush RP-3	13
Gilders Dusting Oval Mop RP-8	13
Burnish Rounds	13
Han-See Pounce Pad	13
Gilding Wheel	13
Gilders Size Brush	13
Gilders Knives	13
Gilding Cushion with Wind Screen	13
Gilding Cushion	13
Gelatin Caps	13
Han-See Pounce Powder	13



CALL (800) 642-4872 **FAX** (877) 329-6424 **E-MAIL** sales@earlmich.com

PAINTS

Lettering Enamels



Designed for traditional sign painting, these oil based high-gloss lettering enamels provide superior vibrancy, flexibility, durability, and single stroke coverage.

- Ideal for interior or exterior metal, glass, wood and enamel receptive banners and vinyl.
- Specified for detailed lettering, pinstripping, and graphics.
- Can be brushed, rolled, airbrushed, or sprayed.
- Superior flow for even spread.
- Virtual absence of brush marks.
- Single stroke coverage with clean, sharp edge.
- High gloss finish is durable and fade resistant.
- Excellent weathering properties.
- Vibrant colors can be intermixed for a low cost, infinite color palette.
- Intended for sign writing on storefronts, vehicles, or wherever fine lettering is desired.



	101-L Lettering White		150-L Blue Green
	103-L Polar White		152-L Light Blue
	114-L Medium Brown		157-L Kansas City Teal
	115-L Dark Brown		158-L Dark Blue
	116-L Ivory		160-L Violet
	117-L Tan		195-L Medium Gray
	118-L Chamois		199-L Lettering Black
	149-L Aqua		

Price

1/4 Pints	\$8.61
1/2 Pints	\$13.01
Pints	\$18.34
Quarts	\$32.72

	142-L Emerald Green		154-L Peacock Blue
	143-L Process Green		156-L Brilliant Blue
	144-L Medium Green		191-L Imitation Gold
	148-L Dark Green		193-L Metallic Silver
	151-L Robin Egg Blue		

Price

1/4 Pints	\$9.29
1/2 Pints	\$14.09
Pints	\$20.00
Quarts	\$35.56

	109-L Metallic Gold		111-L Metallic Brass
	110-L Metallic Copper		

Price

1/4 Pints	\$19.52
1/2 Pints	\$24.26
Pints	\$42.06
Quarts	\$81.24

	120-L Coral		134-L Chrome Yellow
	124-L Orange		141-L Sublime Green
	130-L Primrose Yellow		
	132-L Lemon Yellow		

Price

1/4 Pints	\$10.66
1/2 Pints	\$16.14
Pints	\$22.69
Quarts	\$40.94

	100-L Vermilion		108-L Maroon
	102-L Fire Red		153-L Process Blue
	104-L Bright Red		155-L Reflex Blue
	106-L Kool Crimson		168-L Salmon Pink

Price

1/4 Pints	\$12.47
1/2 Pints	\$17.80
Pints	\$26.02
Quarts	\$46.51

	161-L Proper Purple		164-L Dark Magenta
	162-L Purple		165-L Rubine Red
	163-L Magenta		

Price

1/4 Pints	\$14.58
1/2 Pints	\$21.37
Pints	\$31.16
Quarts	\$56.54

Actual colors may vary. Call for color chart.



MIX AND MATCH, BUY 4 OR MORE CANS OF PAINT & RECEIVE AN ADDITIONAL 30% OFF

CALL (800) 642-4872 **FAX** (877) 329-6424 **E-MAIL** sales@earlmich.com



*Exclusions may apply.

2 Pearlescent / Background Enamels / Bulletin Colors



Pearlescent Enamels



- Oil based, high gloss enamels for exterior use on metal, glass, wood, vehicle graphics and pinstripping.
- Pearlescent colors display a brilliant luster under high intensity light or direct sunlight.
- Excellent for creating transparent washes and glazes when suspended in 1Shot® 4003 clear.

930-P Primrose Yellow	964-P Dark Magenta
900-P Vermilion	948-P Dark Green
904-P Bright Red	950-P Blue Green
943-P Process Green	953-P Process Blue
962-P Purple	955-P Reflex Blue

1/2 Pints

Price
\$17.56

Background Enamels Background Enamel White (4108101)



- Single component, fast-drying high gloss enamel for sign backgrounds where expedient drying is desired.
- Use on metal, wood, some plastics and HDU.
- Usually dry to the touch in 2 hours.

	Price
Quarts	\$25.77
Gallons	\$82.53



Chromatic® Bulletin Colors



- Oil based gloss enamels for interior or exterior use on wood, metal or masonry.
- Excellent limited exterior durability with single coat coverage and gloss finish.
- Formulated to provide easy application with large brushes.
- Fast dry, fast cut in.
- Pure color clarity.
- Ideal for billboards, large areas, industrial applications as well as interior murals.

021 Black	021F Flat Black	Price
Quarts		\$20.21
Gallons		\$64.92

101 White	116 Ivory	Price
114 Medium Brown	158 Dark Blue	
115 Dark Brown	195 Medium Gray	
Quarts		\$25.77
Gallons		\$82.53

144 Medium Green	152 Light Blue	Price
148 Dark Green		
Quarts		\$27.82
Gallons		\$89.16

101SW Super White	Price
Quarts	\$44.53
Gallons	\$82.53

108 Maroon	153 Process Blue	Price
140 Light Green	156 Brilliant Blue	
142 Emerald Green		
Quarts		\$32.71
Gallons		\$105.14

102 Fire Red	130 Primrose Yellow	Price
104 Bright Red	132 Lemon Yellow	
106 Carmine	134 Chrome Yellow	
124 Orange	166 Reflex Blue	
Quarts		\$35.22
Gallons		\$112.89

162 Purple	163 Magenta	Price
Quarts		\$50.07
Gallons		\$160.10



MIX AND MATCH, BUY 4 OR MORE CANS OF PAINT & RECEIVE AN ADDITIONAL 30% OFF

SHOP ONLINE www.earlmich.com **FREE** local delivery on most items.



* Exclusions may apply.

Clear Coatings



Gloss/Sign Restoring



- Oil based clear finish that is ideal for use in topcoating surface gilds.
- Use as a vehicle in which to suspend other 1Shot® products to create translucent and transparent glazes, washes and shading mediums.
- Can be used to restore gloss level on older signs originally painted with 1Shot®.

	Price
4003 Quarts	\$24.36
4003 Gallons	\$63.78



Speed Dry UV Acrylic Gloss



- A fast drying acrylic clear topcoat designed for providing color fade, UV depletion and mild abrasion resistance on printed vinyls and print media.
- Designed for use as edge sealers on multi-layered vinyls, PVC, PVF and metalized polyester films.
- Not recommended for use on vehicle graphics.

	Price
4005 Quarts	\$40.79
4005 Gallons	\$130.64
4005/A Aerosol	\$13.65



GraphiGuard

- UV Resistant Waterborne Clears offer moderate mar resistance and excellent UV protection.
- Use as a protective topcoat for UV ink, Solvent, Eco-Sol and Thermal Resin Transfer Print projects.

	Quarts	Gallons
4331020 Graphiguard High Gloss Clear	\$48.03	\$161.63
4331030 Graphiguard Matte Clear	\$48.03	\$161.63



SuperFrog Sunscreen Clear 7000-UV Protectant Coating

- Glossy UV protectant clear coating, will not yellow.
- Works great with many applications.

	1-5	6-11	12+
12 oz. spray can (covers 25-40 sq. ft.)	\$8.31	\$7.64	\$7.27
Quart can (covers 80-100 sq. ft.)	\$24.96	\$21.22	\$20.58
Gallon can (covers 320-400 sq. ft.)	\$87.46	\$78.72	\$76.35

Additives



Tinting Colors



- Designed as tinting agents for use with 1Shot® Lettering Enamels and Chromatic® Bulletin Colors.
- Black will darken colors without muddying.
- White will lighten colors without washing them out.
- Use with black or whites to create a variety of gray values.

	1/2 Pints	Pints	Quarts
4001 Tinting Black	\$15.80	\$22.74	\$41.13
4002 Tinting White	\$15.36	\$21.86	\$39.47



Brush Cleaner



- Designed to clean oil based paints from quality, natural hair brushes, but to do so without damaging the hair of the brush.
- Conditions and softens the brush and can be used to restore partially hardened natural and nylon brushes.

	Quarts
4004 Brush Cleaner	\$14.92



Hardener



- Designed to accelerate drying time for all 1Shot® Background, Lettering and Pearlescent Enamels as well as Chromatic® Bulletins.
- Improve adhesion qualities as well as extend color life and increase gloss retention.

	Pints
4007 Hardener	\$47.83



Clear Flattening Paste



- Mix with Lettering Enamels or Chromatic Bulletins to modify gloss levels for both interior and exterior use.
- A 1:1 mix ratio will result in nearly dead flat finish, with lesser amounts yielding varying degrees of gloss ranging from semi-gloss to eggshell.

	Quarts
4329500 Clear Flattening Paste	\$31.21



MIX AND MATCH, BUY 4 OR MORE CANS OF PAINT & RECEIVE AN ADDITIONAL 30% OFF

CALL (800) 642-4872 **FAX** (877) 329-6424 **E-MAIL** sales@earlmich.com



*Exclusions may apply.

Reducers



Chromo Flow Enhancer



- Designed to act as a flow enhancing additive for use with brush applications of 1Shot® Lettering Enamels and Chromatic® Bulletin Colors.
- When using sparingly, will increase brush control, decrease brush drag and enhance flow and leveling characteristic; especially suitable for lettering and pinstripping applications.

	Quarts
6000 Chromo Flow Enhancer/Reducer	\$23.62



Low Temp Reducer



- Formulated to improve flow and leveling at low temperatures by reducing viscosity and accelerating the evaporation process without significantly reducing the quality of the coating.
- Ideal for spray and airbrush applications, as it exhibits superior atomization.

	Quarts
6001 Low Temp Reducer	\$18.49



High Temp Reducer



- Formulated to improve flow and leveling at high temperatures by reducing viscosity and retarding the evaporation process without significantly reducing the quality of the coating.
- Ideal for lettering, graphics and pinstripping applications.

	Quarts
6002 High Temp Reducer	\$17.51

Water Based Primers



Universal White Primer



- Waterborne high performance modified acrylic primer suitable for use on wood, metal, HDU and most masonry applications.
- Offering excellent adhesion qualities, easy to apply and sand.
- Dries fast enough that you'll be painting in three hours.

	Quarts	Gallons
4411008 Universal White Primer (for most sign substrates)	\$28.27	\$88.87



White High Build Primer



- A high viscosity waterborne primer with excellent filling and building characteristics.
- Ideally suited for HDU, most woods and foam.
- High coverage and opacity characteristics can be easily sanded smooth.
- Formulated to accept both oil and waterborne topcoats.

	Quarts	Gallons
4411010 White High Build Primer	\$50.26	\$102.27

Solvent Based Primers/Blockout



Metal & Wood Primer



- High opacity, solvent based primer with exceptional adhesion qualities over both wood and metal surfaces.

	Quarts	Gallons
4403101 PMW/PW Metal & Wood Primer - White	\$36.37	\$74.45



Fast Dry Block Out White



- Fast drying, high opacity coating designed for use in blocking out previously painted sign faces.
- Can also be used as a primer on new MDO sign faces and is easily sanded.
- Popular in high, and rapid production environments due to its fast drying times, generally drying to a dead flat finish in about 2 hours.

	Quarts	Gallons
4420101 PBOW Fast Dry Block Out White	\$36.37	\$74.45

Chromatic® Vinyl Coatings



TI-COTE Clear Primer Barrier Coat - Gloss/Flat



- Waterborne primer/barrier intended for use on most flexible synthetic fabrics including untreated (non-ERC) banner materials, canvas, leather, and most synthetic awning fabrics.
- Makes the non-enamel receptive surfaces ready to paint.
- Ti-Cote is milky white when applied, but dries clear and is generally ready to paint in 1-2 hours.

	Quarts	Gallons
4331010 TI-COTE Clear Primer Barrier Coat, Gloss	\$46.51	\$132.30
4331011 TI-COTE Clear Primer Barrier Coat, Flat	\$46.51	N/A



Vinyl Primer



- Clear, water based primer for vinyl and most rigid synthetic surfaces including expanded PVC, corrugated styrene, ABS plastics and most PVC vinyl film products.
- Create a barrier against plasticizer migration, making surfaces suitable for finishing with 1Shot® Background and Lettering Enamels, Chromatic Bulletin Colors.
- While milky when applied, dries clear, and is generally ready to accept 1Shot® paint products in 30-40 minutes.

	Quarts	Gallons
5004 Vinyl Primer	\$42.97	\$128.84



MIX AND MATCH, BUY 4 OR MORE CANS OF PAINT & RECEIVE AN ADDITIONAL 30% OFF

SHOP ONLINE www.earlmich.com **FREE** local delivery on most items.



*Exclusions may apply.

BRUSHES

Striping Brushes

Kafka Longliner Series



- Designed to run consistent, long lines.
- Greater line quality and control.
- Received accolades from top longline pinstripers, claiming that all future brushes will be compared to this one.

Size	Price
00000	\$18.20
000	\$18.20
00	\$18.20
0	\$18.54
1	\$19.03

The Original "Mack" Sword Striping Brush



- Hand crafted and shaped as it was many years ago.
- 100% Chinese blue squirrel hair.

Size	Price
000	\$14.25
00	\$14.74
0	\$15.23
1	\$15.72
2	\$16.53
3	\$17.34
4	\$18.36

X-caliber Striper - Series X



- Short blue squirrel hair length.
- Allows greater control.
- For intricate designs as well as long lines.

Size	Price
0000	\$16.43
000	\$16.88
00	\$17.33
0	\$17.78

Bobbo Super Quad



- Mix of fine blue squirrel & black synthetic hair.
- Four action brush.
- Works for scrolling, pinstripes short lines, letter your signature, very small and small lettering.

Size	Price
00	\$8.89
0	\$9.36
1	\$9.73
2	\$10.11

Bobbo Long Handled Super Quad



- A long handled version of the Bobbo Super Quad.

Size	Price
00	\$8.42
0	\$9.83
1	\$10.33
2	\$11.14

Lettering Brushes

Brown Kazan Lettering Quill Series 179L



- Finest Brown Kazan squirrel hair.
- With attached red lacquered handle.
- Essential for every sign painter.
- Best suited for smooth surfaces such as glass or automotive surfaces.

Size	Price
#2	\$9.70
#4	\$10.51
#6	\$12.66
#8	\$14.29
#10	\$19.49
#12	\$22.45
#14	\$24.19
#16	\$25.82

Grey Talahoutky Lettering Quill Series 189L



- Grey hair has more snap and more durable than the brown.
- Great for general commercial work.
- Suitable for most surfaces.
- Attached with black lacquered handle.

Size	Price
#0	\$9.49
#2	\$10.32
#4	\$11.72
#6	\$14.83
#8	\$16.73
#10	\$25.14
#12	\$28.05
#14	\$31.55
#16	\$33.56
#18	\$36.56
#20	\$40.07

Jet Stroke Truck Letterer Series 1962



- Pure squirrel-black ox mixture with dark brown handles.
- Excellent overall lettering brush for larger letters.
- Long hair length to carry a lot of paint.

Size	Price
1/4"	\$6.16
3/8"	\$7.71
1/2"	\$10.47
1"	\$21.55
1 1/2"	\$35.04

Mack Grey Stroke Lettering Brush Series 1932



- Pure blue squirrel-black ox mixture.
- Same body and snap of grey squirrel hair and less expensive.

Size	Price
1/2"	\$13.02
3/4"	\$19.06
1"	\$22.33



6 Brushes - Lettering / Outliner

Lettering Quill Series 169



- Black synthetic and blue squirrel hair mixture.
- American made.
- Nickel plated ferrule quill.
- Great cost-conscious choice.

Size	Price
0	\$5.98
1	\$6.17
2	\$6.46
4	\$7.04
6	\$8.58
8	\$9.64
10	\$12.92

Hannukaine Lettering Quill Series 79



- Mixture of squirrel and Taklon.
- Works great with oil and water media.
- Nice edge, lots of snap and longer life.

Size	Price
#2	\$6.19
#3	\$6.40
#4	\$6.83
#6	\$8.43
#8	\$9.39
#10	\$10.24
Set of 6	\$42.46

Sabeline One Stroke Signwriter Series 160



- Finest selected Sabeline hair with polished handle.
- Used for bigger show card and lettering work.
- Lots of snap.
- Makes a nice straight razor edge.

Size	Price
1/4"	\$5.78
1/2"	\$9.26
3/4"	\$14.82
1"	\$21.55

Kafka Signwriter Series Kwills



- Modern mixture of synthetic and natural hair.
- Incredible control and flow.
- Design is different than anything previously available.

Kwills are the cornerstone brush for any lettering challenges, whether the task is block, Roman, or script.

Size	Price
0	\$11.40
1	\$11.97
2	\$13.11
4	\$14.25
6	\$15.77
8	\$17.86
10	\$19.95
12	\$21.85
14	\$24.70
16	\$27.36

Outliner Brushes

Series 838 Outliner



- Blue squirrel/black sable-ox mixture.
- Varnished handles.
- Round ferrule and graduated hair length.
- Used for outlining letters, scroll work and sign work.

Size	Price
#1	\$3.99
#3	\$4.99
#5	\$7.48

Series 839 Outliner



- Pure brown Kazan squirrel and ox.
- Black handles and gold tips.
- Softer hair than 838.
- Will carry more paint.
- Used for outlining letters, scroll work and sign work.

Size	Price
#1	\$5.99
#3	\$7.86
#4	\$9.01
#6	\$12.78

Soft Hair Fitch

Series 4031



- Russian Sable hair with long gold handle.
- Used in lettering paints for layout, outlining, pictorial and tight work.
- Square end, hand cupped to a sharp chiseled edge.

Size	Price
1/4"	\$7.15
1/2"	\$10.82
3/4"	\$23.50
1"	\$29.61

Kafka Signwriter Series Liners



- Modern mixture of synthetic and natural hair.
- Incredible control and flow.
- Design is different than anything previously available.

Liners are perfect outline brushes, but are capable of beautiful script lettering as well as scroll striping designs.

Size	Price
0	\$11.40
1	\$11.59
2	\$11.78
3	\$12.54
4	\$13.68
5	\$14.44
6	\$15.58
8	\$17.29
10	\$19.38
12	\$21.66



SHOP ONLINE www.earlmich.com **FREE** local delivery on most items.



*Exclusions may apply.

Scrolling Brushes

Kafka Signwriter Series Scrolling Stripers



- Designed to turn corners with ease.
- Do design work without flareout.
- Flow striping enamels like no other brush!

Size	Price
0	\$13.79
1	\$13.79
3	\$14.05
5	\$14.18
6	\$14.18

Short Stroke



- Shorter version of #3 signature series scrolling brush.
- Navigates intricate loops and scroll designs easily.
- Achieve flame outlines with greater ease.

Size	Price
3	\$15.93

"The Virus" Scrolling/Script Brush Series 444



- Specially blended golden Taklon.
- Perfect for scroll and script work.

Size	Price
#0	\$5.09
#1	\$5.60
#2	\$6.11
#6	\$7.12

"The Virus II" Scrolling/Script Brush Series 444



- Soft golden synthetic hair.
- Little softer than "The Virus".
- Perfect for scroll and script work.

Size	Price
#0	\$5.09
#1	\$5.60
#2	\$6.11
#4	\$6.61

Signature Brushes

Alan Johnson Signature Brush Series 62



- Made from special Taklon with extra long length.
- Use for signature and fine detail work.

Size	Price
4/0	\$3.95
2/0	\$4.45
1	\$4.94

Kafka Scriptliner Series



- Ideal for all fine detail work and signatures.

Size	Price	Size	Price
00000	\$8.74	8	\$13.10
00	\$8.74	10	\$13.10
0	\$8.74	12	\$15.28
1	\$8.74	Set of 6	\$43.70
2	\$8.74	(00000 thru 4)	
4	\$8.74	Set of 10	\$65.55
6	\$13.10		

Brush Kits & Handles



Anodized Aluminum Brush Kit

- Handles have a rich violet or amber coating.
- Set includes:
 - Original medium striping handle.
 - Short handle.
 - Choice of single or double headed long handle.
 - Choice of 3 different brush heads.
 - Comes in chrome embossed Lazer Line case.

	Price
Anodized Aluminum Brush Kit	\$89.96



Polished Handles 2 1/4" long Polished handle

- Polished aluminum striping handle.
- Light balanced feel.
- Smooth finish.

	Price
2 1/4" Polished Aluminum Handle	\$11.25



Short Polished Aluminum Handle

- Shorter handle for smaller hands.
- Easily turn handle between thumb and index finger.

	Price
Short Polished Aluminum Handle	\$9.00



Long Polished Single Aluminum Handle

- Long handle for lettering and other activities where a quill, outliner, signature or pictorial brush is used.

	Price
Long Polished Single Aluminum Handle	\$13.50



Long Polished Double Aluminum Handle

- Great for mobile sign painters and pinstrippers.
- Run with two different brush heads for switching between brushes on small jobs.

	Price
Long Polished Double Aluminum Handle	\$13.50



8 Brush Heads / Specialty/Industrial/Waterbase Brushes



Lazer Line Black Plague Brush Heads

- Taklon hair with black chrome ferrule.



Size	Price
000	\$5.45
00	\$5.94
0	\$6.44
1	\$6.93
2	\$7.43
3	\$7.92



Lazer Line Scarlet Fever Brush Heads

- Taklon hair with black chrome ferrule.
- Extended to enable smooth, long swirls without the need for excessive re-loading.
- Great for swirls and even out-lining larger lettering.



Size	Price
1	\$6.49
2	\$6.95
3	\$7.42
4	\$8.81
5	\$9.73



Lazer Line Green With Envy Brush Heads

- Taklon hair with a blunt end.
- Great for lettering as it has a lot of spring.



Size	Price
1	\$6.49
2	\$6.95
3	\$7.42
4	\$8.81
5	\$10.20

Specialty Brushes

Mack Phat Handle Brushes Series 77



- Taklon hair is extremely durable.
- Larger handle with a dramatic taper into ferrule of brush for a better feel.

Size	Price
1/4" Shader	\$6.83
1/4" Stroke	\$6.30
Liner	\$5.34



Industrial Brushes



Whitney II All purpose throw-away brush Series 2001

- Works well with paint remover, stripper, spreading resins, varnish, utility, chip, parts cleaning and epoxy brush.

Size	Price
1/2" 36 pcs.	\$13.23
1" 36 pcs.	\$16.56
1 1/2" 36 pcs.	\$21.24
2" 24 pcs.	\$16.80



Poly Brushes and Rollers

- For all smooth surfaces.
- Ideal for enamel, latex, stains, oil paints and varnish.
- NOT for lacquer or shellac.
- Covers correctly with fewer strokes.
- Leaves no brush marks.

Size	Price
1" Brush 48 pcs.	\$18.72
2" Brush 48 pcs.	\$28.32
3" Brush 36 pcs.	\$28.44
4" Brush 24 pcs.	\$24.00

3" Roller 24 pcs.	\$14.16
9" Roller 24 pcs.	\$28.80



Roller Handles

Size	Price
9"	\$2.89
3"	\$2.89

Waterbase/ Acrylic Brushes

Waterbase/Acrylic Lettering Quill Series 2179



- 50% brown Taklon/ 50% pure Kazan squirrel.
- Great for water based/water borne and acrylic paints.

Size	Price
#0	\$5.60
#2	\$6.12
#4	\$6.74
#6	\$8.30
#8	\$9.33
#10	\$10.16
#12	\$12.65

Waterbase/Acrylic One Stroke Lettering Brush Series 2962



- 50% brown Taklon/ 50% pure Kazan squirrel.
- Great for water based/water borne and acrylic paints.

Size	Price
1/4"	\$6.12
1/2"	\$9.33
3/4"	\$15.77
1"	\$25.52

Waterbase/Acrylic Outliner Brush Series 2838



- 50% brown Taklon/
50% pure Kazan squirrel.
- Great for water
based/water borne and
acrylic paints.

Size	Price
#0	\$5.60
#2	\$6.12
#4	\$6.74
#6	\$8.30

Paint Tools & Accessories



Metal Brush Box

- Will protect your brushes while drying, storing, and transporting.
- Brushes are held in place with steel spring coils
5" x 14" overall size.

	Price
Metal Brush Box	\$24.10



Wipe Out Tool (2240)

- This tool can pull or push the paint away to make a perfect edge or corner.

	Price
Wipe Out Tool	\$8.44



Mack Xcaliber Brush Preservative

- Helps maintain the texture and shape of your brushes.
- Environmentally safe.

	Price
MB-16 Mack Brush Preservative 16 oz.	\$8.69

Touch-Up Scraper Series 16



- Camel hair touch up brush with flat edge to scrape product.
- Black plastic handle.

	Price
Touch-Up Scraper	\$.62



Brush Oil and Preservative

Help your brushes maintain their shape and last long. Developed by Steve Kafka. Made from the finest ingredients available and lightly scented with patchouli.

Size	Price
4 oz.	\$5.70
16 oz.	\$11.40



Kafka's "Cheap Insurance" Paint Strainers

Pinstripping and lettering enamel strainers are just right size to allow paint flow while still catching annoying globules. Been used by Steve and his friends for 20 years.

	Price
50 pack	\$11.40



The Reasonably Difficult-to-Break Cup Holder

The name says it all. This stylish, durable new item holds four paint cups at a slight angle so you don't have to.

	Price
Cupholder	\$11.40



Staedtler Omnichrom Pencils

Create your design with this pencil before using your brush. Once happy with the design you can stripe right over your drawing. These "write on anything" pencils are a must. They leave no residue, no ghosts, and will not melt! Colors available: White, Blue, Black and Yellow.

	Price
Each	\$2.37
Box of 12	\$23.70



Stabilo Pencils

Great for making guidelines on a sign surface. Paint over the lines or remove with damp cloth. Paint will not flake or peel when painted over. Colors Available: White, Blue and Graphite.

	Price
Each	\$1.76
Box of 12	\$18.23



Paint Bottle Holder

These squeeze bottle holders are virtually unbreakable and match our cup holders. Great for organizing all the colors you intend on using.

	Price
10 hole	\$20.00
23 hole	\$46.00



CALL (800) 642-4872 **FAX** (877) 329-6424 **E-MAIL** sales@earlmich.com



*Exclusions may apply.



Kafka Design Paint Bottle

Kafka paint bottles have the self cleaning, large opening screw on top and come with an agitator 'orb' to shake up the contents. Available in 4 oz. and 8 oz.

Size	Price
4 oz.	\$1.50
8 oz.	\$2.00



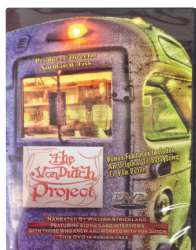
Smooth Stroke

- Will eliminate fish eye from both oil based lettering and striping enamels and urethanes.
- Enhances flow and gloss.
- Makes production more mar resistant for increased durability.

Size	Price
1 oz.	\$5.70
4 oz.	\$11.40

Von Dutch Project DVD

The story of Kenny Howard AKA Von Dutch and the restoration of his famous bus by Steve Kafka. Exclusive interviews with his family and good friends as well as those who worked with him.

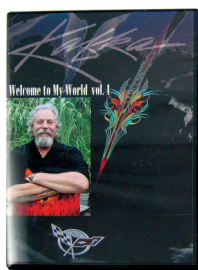


Exclusive stories of his childhood and family life. "Finally the real story about Von Dutch..." Sheila Harlan, Von Dutch's ex wife. Producer Norman Fisk does more than preserve the legacy of Kenny Howard, AKA Von Dutch. "He adds flesh and blood to the myth...and ensures that the contributions that transformed a generation are not forgotten." - Jim Hinckley, Author and Historian.

Price

DVD

\$19.80



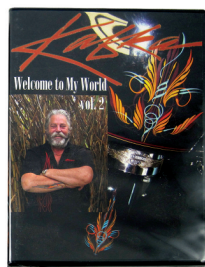
Steve Kafka's Welcome to My World DVD Vol. 1

Get inspired as Steve's step by step 76 minute DVD makes artistic designs easier than ever. Learn the techniques that helped Steve become a master of design and color. He explains the process from practicing brush strokes with the Kafka brushes to developing a design.

Price

DVD

\$35.99



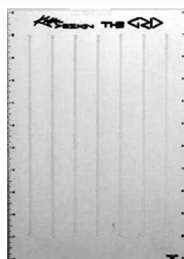
Steve Kafka's Welcome to My World DVD Vol. 2

Volume 2 is almost 2 hours long featuring panel design, truck and Harley projects, with in depth presentation of new additions to my brush line. There are many tips on technique with information on new products developed to make things easier. He references several very well known artists.

Price

DVD

\$35.99



The Grid

A simple design and ease of use make this a must have time saving product. Make a grid in seconds!

	Price
Grid	\$11.40



Steve Kafka Lines and Designs Pinstripe System

Steve designed this easy to follow teaching system to help the beginner or seasoned striper learn to use his innovative Kafka striping brushes. Includes the "Welcome to My World" DVD, 30 pages of original designs, 50 transparencies to use over designs and paperback guide, along with #3 Kafka striping brush, mixing sticks, cup and clip board.

Price

Pinstripe System

\$80.99

Steve Kafka Pinstripping Kit



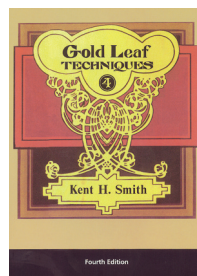
A great kit to get you started in the world of pinstripping. Kit contains: 2 Kafka DVD's, 3 striping brushes, "the grid", 50 filters, Staedtler pencil, 4 oz bottle brush oil, pint of tinting white and 5-1/2 pints of 1 Shot lettering enamels.

Price

Pinstripping Kit

\$199.00

Gold Leaf Techniques, 4th Edition by Kent Smith



- The fourth edition of the original gilder's bible, by Raymond LeBlanc, still details the art of gilding with step-by-step instructions and more than 170 illustrations, covering both the basics of handling gold leaf as well as advanced techniques and applications.
- It explains the basic procedures for creating gold leaf window signs, from layout, pounce patterns and gilding, to backing up, finishing and varnishing.

- Also included are antique effects, common gilding problems, their causes, prevention and solutions.

Price

Gold Leaf Techniques book

\$38.75



GOLD LEAF/GILDING

Gold leaf is sold as follows:

- 1 book which contains 25 leaves (3 $\frac{3}{8}$ " x 3 $\frac{3}{8}$ "). Covers about 1 $\frac{1}{2}$ sq. ft.
- 1 half pack contains 10 books and covers approximately 15 sq. ft.
- 1 pack which contains 20 books and will cover approximately 30 sq. ft.

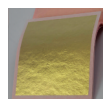
Note - All prices subject to change without notice!

Genuine Wehrung and Billmeier Leaf



23K XXD Surface Gold
Used on the first surface or outside surface of letters, monuments, and fire trucks (loose on carrier sheet).

Book	Half-Pack	Pack
\$58.07	\$539.25	\$1,037.00



23K XXD Glass Gold
Used on the second surface or inside surface of glass (loose on carrier sheet).

Book	Half-Pack	Pack
\$58.83	\$546.32	\$1,050.59

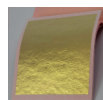
23K XXD Patent Gold
Attached to the carrier sheet so the gold can be used without blowing away. It remains stuck to carrier sheet until pushed onto the gold size. Good for flat cut out letters, fire trucks and flat walls.

Book	Half-Pack	Pack
\$58.83	\$546.32	\$1,050.59



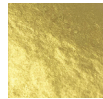
23K XXX Gold Leaf
Extra thick gold (loose on carrier sheet).

Book	Half-Pack	Pack
\$61.56	\$571.67	\$1,099.36



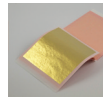
23K XXX Gold Leaf
Extra thick gold. Patent - on a carrier sheet.

Book	Half-Pack	Pack
\$62.32	\$578.71	\$1,112.89



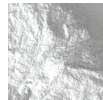
22K XXD Gold Leaf
Slightly more red than 23K (loose on carrier sheet).

Book	Half-Pack	Pack
\$57.08	\$530.08	\$1,019.38



22K XXD Gold Leaf
Slightly more red than 23K Patent - on a carrier sheet.

Book	Half-Pack	Pack
\$57.85	\$537.15	\$1,032.96

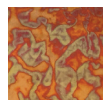


Genuine Silver Leaf
Made from genuine silver, will tarnish without protection.

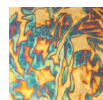
Book	Half-Pack	Pack
\$19.33	\$173.31	\$333.29

Lincoln Especial

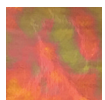
Variegated Leaf - Leaf which has been treated to create colorful patterns in the leaf. 5 $\frac{1}{2}$ " squares.



Sunset Red



Blue Harbor



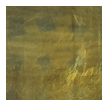
Pink Lace



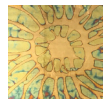
Yellow Diamond



Interstellar



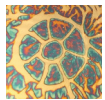
Sage



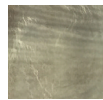
Aquamarine Green



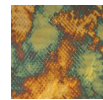
Koi



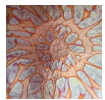
Golden Blueburst



Black Gold



Net Blue

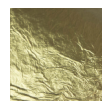


Sunburst Red

Book	Half-Pack	Pack
\$23.86	\$213.91	\$411.37

Giusto Manetti

Genuine Italian Made Leaf Products



23K XX Deep Yellow Surface Gold
Used on the first surface or outside surface of letters, monuments, and fire trucks. (loose on carrier sheet)

Book	Half-Pack	Pack
\$57.67	\$535.49	\$1,029.78



23K XX Deep Yellow Glass Gold
Used on the second surface or inside surface of glass. (loose on carrier sheet)

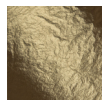
Book	Half-Pack	Pack
\$58.42	\$542.46	\$1,043.20



23K XX Deep Yellow Patent Gold
Attached to the carrier sheet so the gold can be used without blowing away. It remains stuck to carrier sheet until pushed onto the gold size. Good for flat cut out letters, fire trucks and flat walls.

Book	Half-Pack	Pack
\$58.42	\$542.46	\$1,043.20

Lincoln Artisans Budget Leaf Products



Composition Leaf (Dutch Gold)
Made from zinc and copper. 5 $\frac{1}{2}$ " squares

Book	Half-Pack	Pack
\$6.49	\$51.92	\$100.12



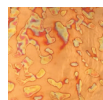
Aluminum Leaf
Silver in color made from pure aluminum. 5 $\frac{1}{2}$ " squares.

Book	Half-Pack	Pack
\$6.41	\$51.28	\$98.90



Copper Leaf
Made from pure copper. 5 $\frac{1}{2}$ " squares

Book	Half-Pack	Pack
\$6.53	\$52.24	\$100.71



Asia Red



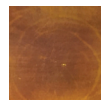
Carbide



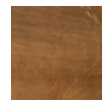
Mystic Black

Book	Half-Pack	Pack
\$21.71	\$194.68	\$374.39

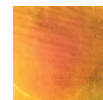
Book	Half-Pack	Pack
\$34.31	\$307.66	\$591.64



Amber



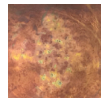
Brunette



Honey



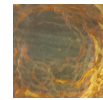
Pink Wave



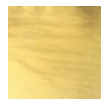
Antique Bronze



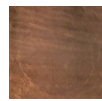
Bubble Gum



Nebula



Aztec

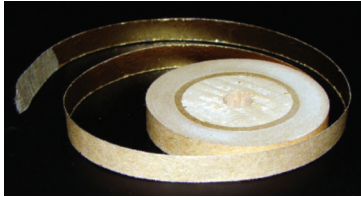


Cocoa

Book	Half-Pack	Pack
\$30.50	\$273.38	\$525.73



23K XX Gold Leaf in Rolls



- Available in 23 kt.
- Real gold leaf in 67 foot long rolls.
- Saves time and material when you only need a thin line, a narrow border, or pin stripe.
- Tissue-backed patent style for easiest handling.

Size	67' Rolls Price	Size	67' Rolls Price	Size	67' Rolls Price
1/4"	\$63.59	1 1/4"	\$267.97	2 1/2"	\$528.89
3/8"	\$91.86	1 1/2"	\$320.15	2 3/4"	\$581.06
1/2"	\$111.41	1 5/8"	\$346.24	3"	\$626.19
5/8"	\$137.50	1 3/4"	\$372.34	3 1/4"	\$678.36
3/4"	\$163.60	2"	\$424.52	4"	\$834.90
1"	\$215.78	2 1/4"	\$476.69		

Gold Size



Giusto Manetti Oil Size

	Clear	Quick Dry Gold Size	Slow Clear Gold Size
75 ml.		\$12.88	NA
250 ml.		\$28.25	\$28.25
1 Lt.		\$79.98	\$79.98

Quick Dry Size

- Suitable for interior and exterior work.
- Reaches tack in 3-5 hours depending on film thickness, temperature and humidity.
- After reaching the proper gilding tack, it will remain open for gilding with genuine gold leaf for 4-6 hours.
- Open time for gilding with metal leaf is shorter, since metal leaf is heavier.

Slow Dry Size

- Suitable for all projects requiring a longer open time for gilding.
- Reaches tack in 12-14 hours and will remain open for gilding for 8-12 hours.

Dux Oil Base



	Clear	Quick Dry Gold Size	Slow Dry Gold Size
1/2 Pint		\$14.93	\$14.93
Pint		\$22.33	\$22.62
Quart		\$40.53	\$41.16

Quick Dry Size

- Clear gilders adhesive (size) for fast leaf work.
- Excellent durability, flexibility and open time for interior and exterior gilding applications.
- Will achieve tack in approximately 1 1/2 hours.
- Tack will remain for approximately the same period of time.

Slow Dry Size

- Has the qualities professional gilders value most.
- Predictable working time.
- Long lasting durability.
- Superior size produces a brilliant gilded surface.
- Specifically formulated to reach tack overnight (12 hours) and to stay open for gilding for an extended period when properly applied.



- Perfect choice for all surface gilding applications.
- Usually reaches its gilding tack in 1 hour or less.
- Window remains open for up to 3 hours for a brilliant and consistent gild every time.

4008 Fast Dry Gold Size 1/2 Pint **\$19.35**

Dux Water Base



- FOR INDOOR GILDING ONLY!
- Clear water-based gilding adhesive (size).
- Formulated for all interior leaf and vertical exterior work where extended tack time is required.
- Does not contain any oils.
- Excellent gilding adhesive that will not stain papers or other absorbent materials that would normally stain with oil type sizes.
- Excellent flexibility and an extended tack time for surface gilding applications.
- Develops tack in 15 to 20 minutes under normal conditions.

	Clear	Quick Dry Gold Size
1/2 Pint		\$11.80
Pint		\$18.14
Quart		\$25.65

Dux Acrylic Sealer Topcoat



- A non-reactive, mineral spirit based, water-clear, non-yellowing acrylic sealer for both genuine and metal leaf.
- Provides protection from abrasion, water and alcohol.
- Dry time 1-3 hours.

Available in both gloss and satin finish.

Description	Pint	Quart	Gallon
Topcoat Gloss	\$20.11	\$33.85	\$95.56
Topcoat Satin	\$20.82	\$34.52	\$98.85

Dux Burnish Sealer Primer



- Oil-based primer-sealer for use with gilding size, ideal for gold and imitation gold leaf projects.
- Creates a smooth surface needing very little to no sanding.
- Use on wood and other porous surfaces as a sealer before gilding.
- Dries to handle - 1 hour, recoat - 8 hours, full cure - 24 hours

Available in yellow for under gold/white metals and gray for silver metals.

Description	Half Pint	Quart
Yellow Burnish Sealer Primer	\$12.99	\$30.43
Gray Burnish Sealer Primer	\$12.99	\$30.43

Gilders Supplies

Gilders Tip Series 1138



- One popular size: 3-1/2" x 2-1/4" length out.
- Single thick Blue Squirrel Hair.
- The single thick tips are more popular since you can see through the single thick hair and you are less likely to make an error.

Price
1138 Gilders Tip **\$31.05**



Mack / Percell Gilders Tip Series RP-4



- One popular size: 3-1/2" x 4-3/8".
- Great for beginners wanting to try genuine gold, silver leaf Palladium gilding with loose leaf.
- Handle is made from plastic so as not to be damaged by water.

Price
RP-4 Gilders Tip **\$15.44**



Mack / Percell Triple Gilders Tip RP-7



- One popular size: 3-1/2" x 2-1/4"
- Gold leaf application brush for loose on glass, metal, and wood.
- Suitable for alcohol, oil, and water based gilding with real gold or silver leaf.
- Triple tip has 3 times the amount of hair of the single tip.
- Great for water gilding with gelatin on large and small reverse glass lettering and mirroring.



Price

RP-7 Triple Gilders Tip **\$25.08**

Gilders Gold Surplus Removal Brush RP-3



- This brush is used for the removal of excess gold leaf when water gilding glass after the backing paints cure.
- The wooden block is 2-1/8" x 4-3/4".
- The block has rounded ends and top with hand grooves in the sides.

Price

RP-3 Removal Brush **\$14.12**

Gilders Dusting Oval Mop RP-8



- Used for removing excess gold leaf by gently brushing away the excess leaf once the gold has set.
- Made of goat hair fibers, attached to a lacquered wood handle.



Size Price

10	\$9.98
14	\$13.97
18	\$17.96
20	\$19.95
24	\$23.95

Burnish Rounds



- 100% pure organic cotton, 2" round pads.

Price

25 Pack **\$7.44**

Han-See Pounce Pad



- Used by thousands of sign artists over the years for trucks, window, and small flatwork.
- Made of plastic and has a fill hole and cap that when uncorked may be filled with Han-See's pounce powders.
- To use, simply attached your perforated pattern to the lettering surface of choice, then Pounce (hop or bounce) across areas that you wish the patterns design to be transferred to.

Price

Pounce Pad **\$19.44**

Gilding Wheel



- Tool for applying roll leaf.
- Available in 2 sizes: 1/4" to 2" and 2" to 5".

Size Price

Small 1/4" to 2"	\$137.64
Large 2" to 5"	\$137.64

Gilders Size Brush

- Designed for water gilding glass with loose leaf.
- Brush is 1-1/2" wide.
- Squirrel hair with painted wooden handle.



Price

Gilders size brush **\$17.19**

Gilders Knives

- Used for cutting and trimming gold or other metal leaf.
- Gold leaf is first placed on a gilders pad, where a slight pressure of the knife will easily cut the leaf.



Price

Gilders Knife Deluxe **\$29.58**
5-1/2" square top

Gilding Cushion w/wind screen



- Cushion is 5-1/2" wide x 9-1/2" long and has a wind shield built into to protect gold leaf.
- Gilders use a knife and a gilders pad to cut gold leaf.
- Made from softened doeskin resting on a soft pad attached to wood.

Size Price

5-1/2" x 9-1/2"	\$78.56
-----------------	---------

Gilding Cushion

- Gilding pad or cushion is 7" wide x 10-1/2" long.
- Gilders use a knife and a gilders pad to cut gold leaf.
- Made from softened doeskin resting on a soft pad attached to wood.



Size Price

7" x 10-1/2"	\$73.57
--------------	---------

Gelatin Caps



- Gelatin is dissolved in warm water to make a transparent size for certain gilding uses, notably in glass gilding and gilding the reverse side of mirrors.

Price

25 pcs.	\$14.40
100 pcs.	\$51.84

Han-See Pounce Powder

- The blended charcoal minimizes peaking and prevents pounce stain.
 - Blended white provides excellent visibility and hold without peaking and use the blue for those times white won't do the job.
 - Double bagged in heavy duty bags.
- Available in White and Black.

Size Price

White	\$10.08
Black	\$10.08

