



LED

LED Sign Modules

Ascent Series.....	1
1x3	1
2x3	1
Summit Series	2
1x2	2
2x2	2
1x1	2
K-2 Summit Series	2
1x3	2

LED Signage Retrofit Rail Systems

Summit Retrofit Rail System	3
Summit K2 Rail System	3

Side View Series LED Sign Module

Side View Series.....	3
------------------------------	----------

RGB LED Sign Module

RGB LED Series.....	4
1x3	4
RGB Controllers.....	4
Base Series LED Module	4
1x3	4
1x2	4

LED Power Supplies

12 Volt Power Supplies	5
24 Volt Power Supplies	5

Awning Illuminator

LED Marquee Lamp




ILT INNOVATIONS

Products • Capabilities • Applications

InternationalLight
TECHNOLOGIES

International Light Technologies has provided innovative design and engineering solutions for LED lighting applications for over 50 years. Many sign industry professionals choose ILT Innovations products to assure quality and consistency in their signage and display applications. One of the leaders in LED innovations, ILT has developed products focused on reducing or eliminating specific issues encountered in today's sign market.

Innovations

- Sideview module to address the move toward more shallow channel letters.
- ILT Retrofit Rail System that enables easy replacement of fluorescent tubes or neon quickly and cost-effectively.
- Constant Current Technology to provide more consistent power to each LED, eliminates voltage drop and line loss issues.
- Provides more uniform light output and prevents damage from overdriving.

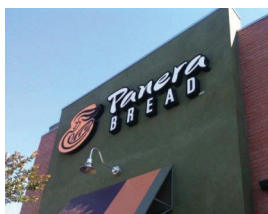
Solutions

- Consistent, quality controlled color temperature a must for digital and color-critical corporate branding.
- Highest lumen per watt light output.
- Providing ISO 9001 quality assured products and systems.
- Industry standard 5 year warranty with labor warranty for approved signage programs.
- UL Approved in US and Canada.

Ascent Series LED Sign Modules

High quality LED solution for channel letters (face and halo), internally illuminated sign cabinets, architectural lighting, cove, and accent lighting.

- 3 or 6 Osram Opto SMD LEDs per module.
- 3 modules per ft., 10 ft. per strip to minimize cost.
- Low profile-under 1/4 inch thick.
- Industry standard 5 year warranty with labor warranty for approved signage programs.
- 3M VHB double faced tape.
- Mechanical fasteners for a secure installation included.
- Low power draw, able to power 180 white modules (60 ft.) of 1x3, and 90 white modules (30 ft.) of 2x3, on a 12 volt 60 watt power supply.
- 140° viewing angle.
- Available in 6500K "Sign white", and 5100K color temperature.
- 100% potted module to insure water-resistance IP67.
- UL Listed in US and Canada.



Ascent Series 1x3 (30 modules, 10 feet/box)

		1-14 boxes	15-24 boxes	25+ boxes
ILT-1x3-W	5100K White	\$23.40	\$22.70	\$22.02
ILT-1x3-W65	6500K White	\$23.40	\$22.70	\$22.02
ILT-1x3-R	Red	\$18.20	\$17.65	\$17.12

Ascent Series 2x3 (30 modules, 10 feet/box)

ILT-2x3-W	5100K White	\$39.00	\$37.83	\$36.70
ILT-2x3-W65	6500K White	\$39.00	\$37.83	\$36.70
ILT-2x3-R	Red	\$27.95	\$27.11	\$26.30



CALL (800) 642-4872 **FAX** (877) 329-6424 **E-MAIL** sales@earlmich.com



*Exclusions may apply.

2 LED Modules

Summit Series LED Sign Modules

High quality LED solution for channel letters (face and halo), internally illuminated sign cabinets, architectural lighting, and retro-fitting.

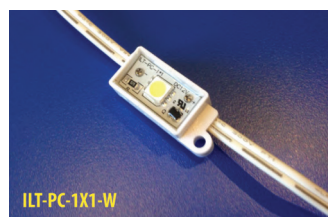
Summit Series 1x2 / 2x2

- 2 or 4 - 5050 SMD LEDs per module.
- 2 modules per ft., 25 ft. per strip.
- 3M VHB double faced tape.
- Mechanical fasteners for a secure installation included.
- Low power draw, 60 modules (30 ft.) of 2x2, and 120 modules (60 ft.) of 1x2, on a 12 volt 60 watt power supply.
- Lumen output for White-160 lm per foot (2x2) and 80 lm per foot (1x2).
- 140° viewing angle.
- Controlled color consistence, 6500K color temperature.
- Constant current technology on the board.
- NEMA 6-6p or IP67 rated.
- UL Listed in US and Canada.
- Industry standard 5 year warranty with labor warranty for approved signage programs.



Summit Series 1x1

- 1 - 5050 SMD LEDs per module.
- 4 modules per ft., 15 ft. per strip.
- Lumen output for White-88 lm per foot.
- Low power draw, 240 modules (60 ft.) on a 12 volt 60 watt power supply.



1-9 boxes 10-19 boxes 20+ boxes

Summit Series 1x2 (50 modules, 25 feet/box)

ILT-PC-1x2-W	6500K White	\$62.40	\$60.53	\$58.71
ILT-PC-1x2-R	Red	\$62.40	\$60.53	\$58.71

Summit Series 2x2 (50 modules, 25 feet/box)

ILT-PC-2x2-W	6500K White	\$98.80	\$95.84	\$92.96
ILT-PC-2x2-R	Red	\$98.80	\$95.84	\$92.96

Summit Series 1x1 (60 modules, 15 feet/box)

ILT-PC-1x1-W	6500K White	\$48.10	\$46.66	\$45.26
ILT-PC-1x1-R	Red	\$48.10	\$46.66	\$45.26

K-2 Summit Series 1x3

- K2 TurnLoc mounting system.
- 3-3030 SMD LEDs per module.
- 164.7 degree beam angle.
- 2 modules per ft., 25 ft. per strip.
- 3M VHB double faced tape plus mechanical fasteners.
- Low power draw, 30 ft. of modules on a 12 volt 60 watt power supply.
- Lumen output for white 190-210 lm per foot.
- Controlled color consistence, 6500K color temperature.
- Constant current technology on the board.
- NEMA 6-6p or IP67 rated.
- 5 year warranty.



1-9 boxes 10-19 boxes 20+ boxes

K-2 Summit Series 1x3 (50 modules, 25 feet/box)

ILT-1x3-W65-160	6500K White	\$85.80	\$83.23	\$80.73
-----------------	-------------	---------	---------	---------



SHOP ONLINE www.earlmich.com **FREE** local delivery on most items.



*Exclusions may apply.

LED Signage Retrofit Rail Systems

Enables easy replacement of existing fluorescent tubes or neon quickly and cost-effectively with Summit LED sign modules in double-faced cabinets, fuel price signs, fuel pump canopy fascia, logo signs, pylon signs, and large channel letters.

Summit Retrofit Rail System

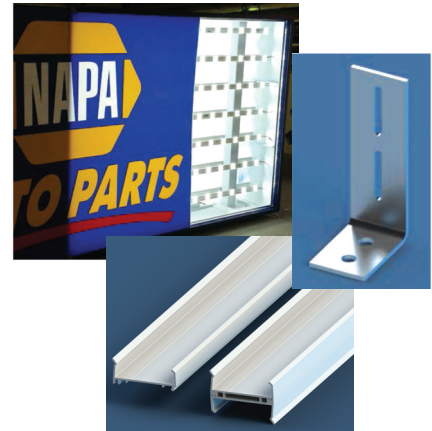
- Summit LED sign modules easily snap into rail system – no tape or hardware needed.
- Rails are made of rigid PVC plastic and can be cut to length with hacksaw.
- Custom right-angle mounting brackets available.
- Snap rails back-to-back for double-faced signs.
- UL Recognized for new and retrofit signs.
- Long life – 5 year warranty.

Rail System Components

Sign Rail Rigid PVC plastic 8' long pieces	1-5 cases	6-10 cases	11+ cases
ILT-RAIL-96 (Box of 25) Sign rail - 8' pieces	\$208.00	\$201.76	\$195.71
ILT-RAIL-96 (each) Sign rail - 8' pieces	\$9.15	\$8.96	\$8.64

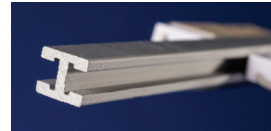
Bracket

Custom right-angle aluminum mounting bracket	1-14 pcs.	15-24 pcs.	25+ pcs.
SHM30508P1 Brackets	\$1.30	\$1.26	\$1.22



Summit K2 Rail System

- Summit K2 sign modules with patented TurnLoc™ mounting system - simply insert the pin on the module into the K2 rail and turn 90 degrees to lock it in place.
- Rails are made of aluminum and can be cut to length with hacksaw.
- Custom right-angle mounting brackets available.
- UL recognized for new and retrofit signs.
- Long life - 5 year warranty.



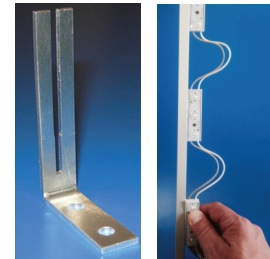
Push Turnloc Pin completely into K2 Rail

Summit K2 Retrofit Sign Rail

Extruded aluminum - 8' long pieces	1-5 cases	6-10 cases	11+ cases
ILT-RAIL-K2-96 (Box of 25) Sign rail - 8' pieces	\$136.50	\$132.41	\$128.43
ILT-RAIL-K2-96 (each) Sign rail - 8' pieces	\$6.01	\$5.88	\$5.67

Brackets

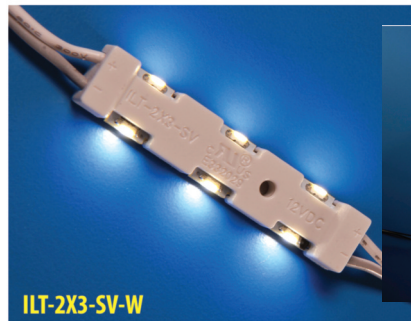
Custom right-angle aluminum mounting bracket	1-14 pcs.	15-24 pcs.	25+ pcs.
SHM30633P1 Summit K2 rail system brackets	\$1.95	\$1.89	\$1.83



Side View Series LED Sign Module

High quality LED solution for shallow channel letters (face and halo), shallow illuminated sign cabinets up to 2" depths, architectural lighting, cove and accent lighting.

- 6 side emitting SMD LEDs per module.
- 3 modules per ft., 20 ft. per strip to minimize cost.
- Low profile-under 1/4 inch.
- 3M VHB double faced tape.
- Mechanical fasteners for a secure installation included.
- Low power draw, able to power 140 white modules on a 12 volt 60 watt power supply.
- Lumen output for white 90 lm per foot.
- Conformal coated board under protective PVC housing to insure water-resistance.
- UL Listed in US and Canada.
- Industry standard 5 year warranty with labor warranty for approved signage programs.



Side View Series (60 modules, 20 feet/box)

		1-9 boxes	10-19 boxes	20+ boxes
ILT-2x3 SV-W	6500K White	\$77.28	\$74.96	\$72.71
ILT-2x3 SV-R	Red	\$77.28	\$74.96	\$72.71



CALL (800) 642-4872 **FAX** (877) 329-6424 **E-MAIL** sales@earlmich.com



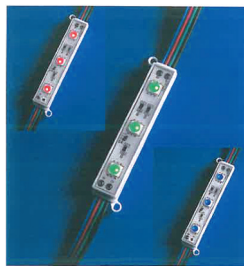
* Exclusions may apply.

4 LED Modules / Controllers / Amplifiers

RGB LED Sign Module

High quality LED solution for shallow channel letters (face and halo), internally illuminated sign cabinets, architectural lighting, cove, and accent lighting.

- 3 Super Flux 5050 3-in-1 Red, Green, & Blue SMD LEDs per module.
- 2 modules per ft., 15 ft. per strip.
- 3M VHB double faced tape.
- Mechanical fasteners for a secure installation included.
- Low power draw, 75 modules on a 12 volt 60 watt power supply.
- 140° viewing angle.
- Module shaped by injection molded UL approved PVC.
- UL Recognized.
- Industry standard 5 year warranty with labor warranty.



RGB LED Series (30 modules, 15 feet/box)	1-9 boxes	10-19 boxes	20+ boxes
ILT-1X3-RGB	\$49.68	\$48.19	\$46.74



RGB Controllers		1-9 pcs.	10-19 pcs.	20+ pcs.
ILT-WIFI-104	5 IN 1 Wifi Controller	\$131.95	\$127.99	\$124.15
ILT-WIFI-ZCTL	Zone LED Controller R4-5A	\$69.00	\$66.93	\$64.92
GTL-LED-RGB-CTL	RGB Controller w/17 channel remote	\$84.50	\$81.97	\$79.51
GTL-LED-WAMP	Waterproof RGB Signal Amplifier	\$59.34	\$57.56	\$55.83
GTL-LED-RGB-AMP	RGB Signal Amplifier	\$59.34	\$57.56	\$55.83
ITL-RGBC-WM	Wireless RGB Master Controller	\$156.00	\$151.32	\$146.78
ITL-RGBC-WS	Wireless RGB Slave Controller	\$91.00	\$88.27	\$85.62

Base Series LED Sign Module

High quality LED featuring high lumen output through a 160 degree beam angle lens designed for channel letters (face and halo), internally illuminated sign cabinets, architectural lighting, cove, and accent lighting.

- 2 or 3 SMD LEDs per module.
- 2 modules per ft., 15 per strip to minimize cost.
- Fully molded 160 degree lens attached to integrated cup design.
- 3M VHB double faced tape or mechanical fasteners included.
- Low power draw, able to power 125 white modules (62 ft.) of 1X2 or 82 white modules (41 ft.) of 1X3 on a 12 volt 60 watt power supply.
- IP66 rated.
- UL recognized in US and Canada.
- 5 year warranty.



Base Series LED Sign Module (30 modules, 15 feet/box)		1-14 boxes	15-24 boxes	25+ boxes
ILT-BA-1X3-W65	6500K White	\$23.40	\$22.70	\$22.02
ILT-BA-1X2-W65	6500K White	\$19.50	\$18.92	\$18.35



SHOP ONLINE www.earlmich.com **FREE** local delivery on most items.



* Exclusions may apply.

LED Power Supplies

12 Volt Power Supplies

For use with all ILT LED modules and 12V Flexible strip lights. Constant current power supply and short circuit protection keep your LEDs safe and performing well.



12V Power Supply		Rating	Warranty	1-9 pcs.	10-19 pcs.	20+ pcs.
ILT-CEN-60-12 (Meanwell)	60 Watt 90-277 AC input	IP66	5 Year	\$49.28	\$47.80	\$46.36
ILT-LPF-60D-12 (Meanwell)	60 Watt 90-277 AC input-Dimming	IP67	5 Year	\$60.75	\$58.93	\$57.16
ILT-UNV-60-12Q (Universal)	60 Watt 90-277 AC input IP67	IP67	5 Year	\$53.33	\$51.73	\$50.17
ILT-PSU-60-12 (Intl Light tech)	60 Watt 90-264 AC input	IP66	3 Year	\$20.93	\$20.30	\$19.69
LT-LV60-12	60 Watt 90-277 AC input IP67 (12V)	IP67	5 Year	\$34.45	\$33.42	\$32.41
LT-LV100-12	100 Watt 90-277 AC input IP67 (12V)	IP67	5 Year	\$53.95	\$52.33	\$50.76

24 Volt Power Supplies

For use with Awning Illuminator system.

24V Power Supply		Rating	Warranty	1-9 pcs.	10-19 pcs.	20+ pcs.
ILT-CEN-60-24 (Meanwell)	60 Watt (24V)	IP66	5 Year	\$50.63	\$49.11	\$47.63
ILT-LPF-40-24 (Meanwell)	40 Watt (24V)	IP66	5 Year	\$44.59	\$43.25	\$41.95
ILT-L24V100UNVA (Universal)	100 Watt (24V)	IP66	5 Year	\$54.00	\$52.38	\$50.81
LT-HLG-100H24B	100 Watt 120-277 input, Dimming (24)	IP66	5 Year	\$87.10	\$84.49	\$81.95

Awning Illuminator

Designed for awning illumination and awning retrofits.

- Comes in 6500K "Sign" white.
- Low power consumption.
- Low profile, only 0.5" tall.
- High output up to 510 Lumen per foot.
- All awning illuminator fixtures manufactured in the USA.
- UL Recognized for US and Canada.
- 5 year warranty.
- Also available in 4000K and 5000K for non-signage applications.
- Uses 24V power supplies.

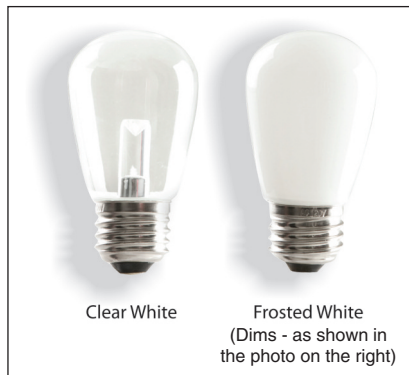


Awning Illuminator		1-9 pcs.	10-19 pcs.	20+ pcs.
ILT-AI-P-12-W65	Potted Awning Illuminator 13.4"	\$27.27	\$26.45	\$25.65
ILT-AI-P-48-W65	Potted Awning Illuminator 44.4"	\$100.59	\$97.57	\$94.64
ILT-AI-P-72-W65	Potted Awning Illuminator 70.65"	\$147.38	\$142.96	\$138.67

LED Marquee Lamp

Great product for exposed channel letters, marquees, decorative borders, and architectural & landscape borders.

- S14 premium glass bulb.
- UL wet location.
- 40,000 hour rated life.
- E26 medium base.
- Low 1.4 watt power consumption.
- 80+ CRI (color rendering index).
- 5 year limited warranty.



LED Marquee Lamp

		Each 1-24 pcs.	Case of 25 1-7 cases	Case of 25 8+ cases
ILT-S14-FW-5K	Marquee Lamp Frosted 5500K			
ILT-S14-FW-27K	Marquee Lamp Frosted 2700K			
ILT-S14-CW-5K	Marquee Lamp Clear 5500K	\$9.50	\$236.54	\$231.81
ILT-S14-CW-27K	Marquee Lamp Clear 2700K			



CALL (800) 642-4872 **FAX** (877) 329-6424 **E-MAIL** sales@earlmich.com



*Exclusions may apply.